

Relação do aço

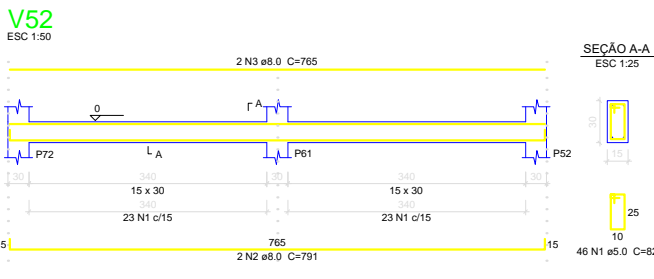
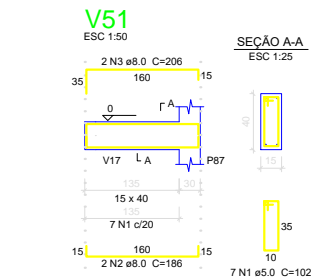
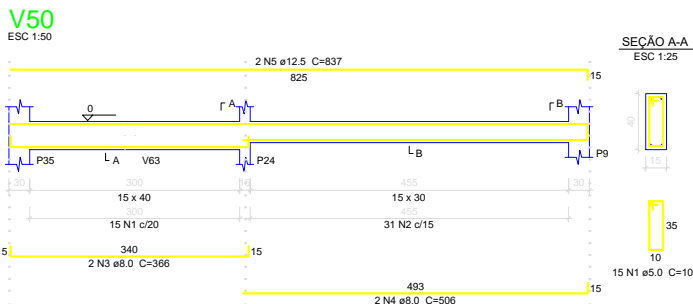
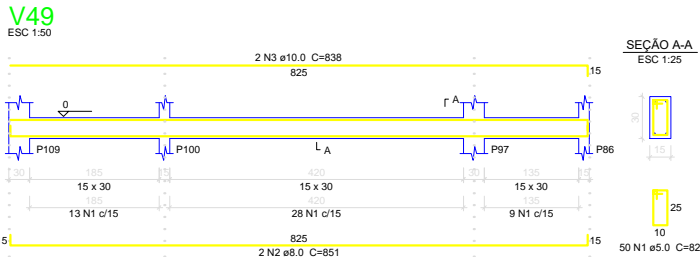
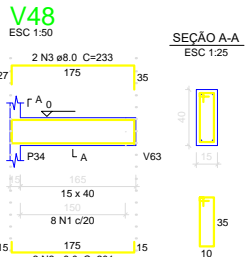
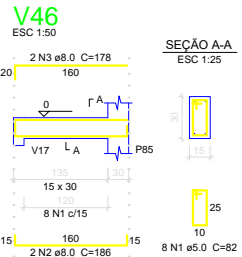
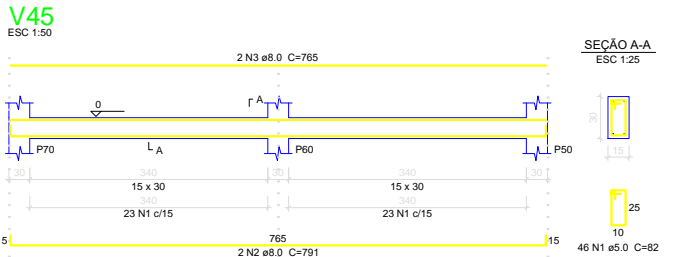
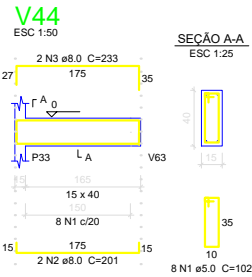
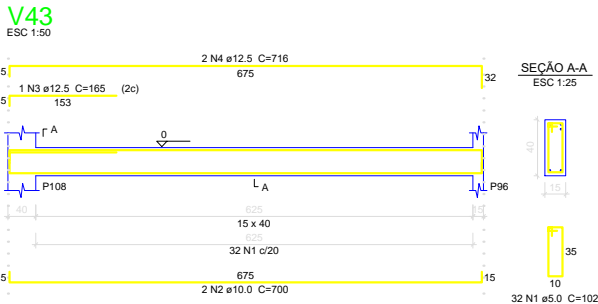
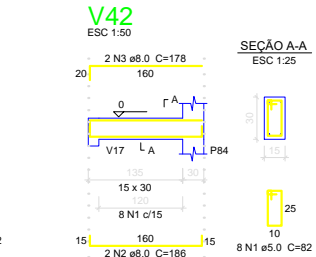
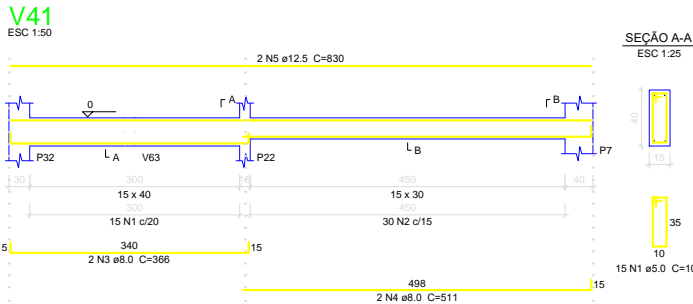
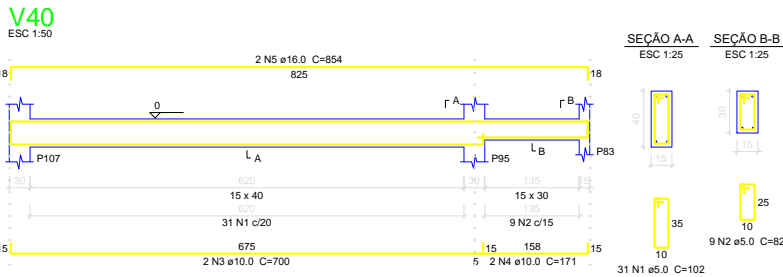
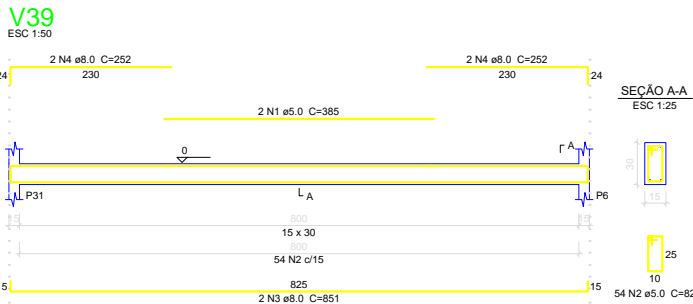
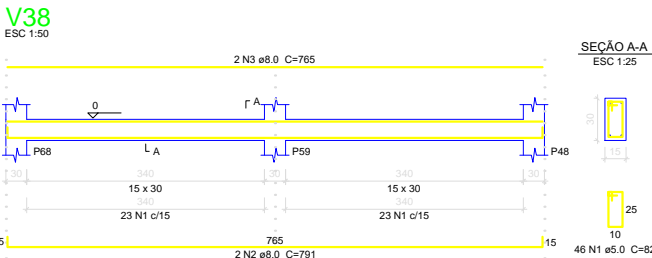
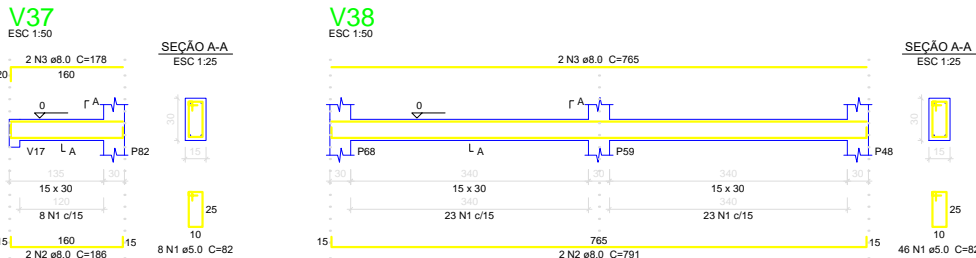
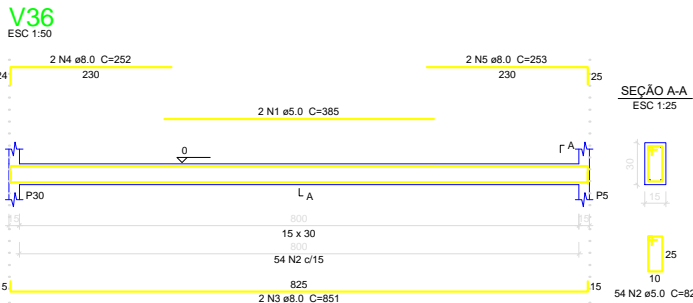
ELEMENTO	AÇO	N	DIAM	Q	UNIT	C.TOTAL
					(cm)	(cm)
V36	CA60	1	5.0	2	385	770
	CA60	2	5.0	54	82	4428
	CA50	3	8.0	2	851	1702
	CA50	4	8.0	2	252	504
	CA50	5	8.0	2	253	506
V37	CA60	1	5.0	8	82	656
	CA50	2	8.0	2	186	372
	CA50	3	8.0	2	178	356
V38	CA60	1	5.0	46	82	3772
	CA50	2	8.0	2	791	1582
	CA50	3	8.0	2	765	1530
V39	CA60	1	5.0	2	385	770
	CA60	2	5.0	54	82	4428
	CA50	3	8.0	2	851	1702
V40	CA50	4	8.0	4	252	1008
	CA60	1	5.0	31	102	3162
	CA60	2	5.0	9	82	738
	CA50	3	10.0	2	700	1400
	CA50	4	10.0	2	171	342
V41	CA50	5	16.0	2	854	1708
	CA60	1	5.0	15	102	1530
	CA60	2	5.0	30	82	2460
	CA50	3	8.0	2	366	732
	CA50	4	8.0	2	511	1022
V42	CA50	5	12.5	2	830	1660
	CA60	1	5.0	8	82	656
	CA50	2	8.0	2	186	372
	CA50	3	8.0	2	178	356
	CA60	1	5.0	32	102	3264
V43	CA50	2	10.0	2	700	1400
	CA50	3	12.5	1	165	165
	CA50	4	12.5	2	716	1432
	CA60	1	5.0	8	102	816
	CA50	2	8.0	2	201	402
V44	CA50	3	8.0	2	233	466
	CA60	1	5.0	46	82	3772
	CA50	2	8.0	2	791	1582
	CA50	3	8.0	2	765	1530
	CA60	1	5.0	8	82	656
V45	CA50	2	8.0	2	186	372
	CA50	3	8.0	2	178	356
	CA60	1	5.0	8	102	816
	CA50	2	8.0	2	201	402
	CA50	3	8.0	2	233	466
V46	CA60	1	5.0	50	82	4100
	CA50	2	8.0	2	851	1702
	CA50	3	10.0	2	838	1676
	CA60	1	5.0	15	102	1530
	CA60	2	5.0	31	82	2542
V47	CA50	3	8.0	2	366	732
	CA50	4	8.0	2	506	1012
	CA50	5	12.5	2	837	1674
	CA60	1	5.0	7	102	714
	CA50	2	8.0	2	186	372
V48	CA50	3	8.0	2	206	412
	CA60	1	5.0	46	82	3772
	CA50	2	8.0	2	791	1582
	CA50	3	8.0	2	765	1530

Resumo do aço

AÇO	DIAM	C.TOTAL	PESO
		(m)	(kg)
CA50	8.0	246.7	97.3
	10.0	48.2	29.7
	12.5	49.4	47.5
	16.0	17.1	27
CA60	5.0	453.6	69.9

PESO TOTAL

CA50 201.5
CA60 69.9
Vol. de concreto total (C-25) = 4.43 m³
Área de forma total = 72.55 m²



PREFEITURA MUNICIPAL DE VÁRZEA GRANDE

Av. Castelo Branco, Espaço Municipal, 2500 - Centro Sul, Várzea Grande/MT
CEP 78125-700 - Fone/Fax: 65 3688 8000

PROJETO:

CRECHE DO IDOSO

LOCALIZAÇÃO:

Avenida Presidente Arthur Bernardes s/n
Bairro:Ipase - Várzea Grande - MT

ASSUNTO:

FUNDAÇÃO - DETALHES VIGAS BALDRAMES

AUTORES DO PROJETO:

AUREO EMANOEL DA SILVA
CREA: MT042435

DATA:

11/12/2019

ESCALA:

1/225

FOLHA Nº

04/08